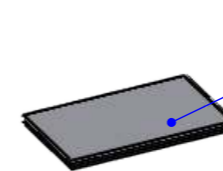
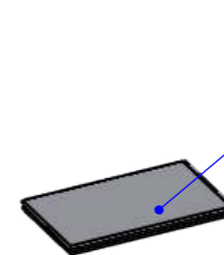
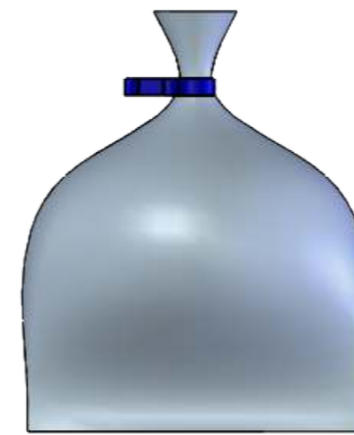
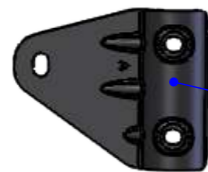
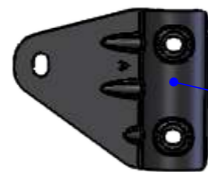
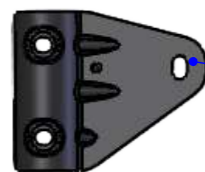
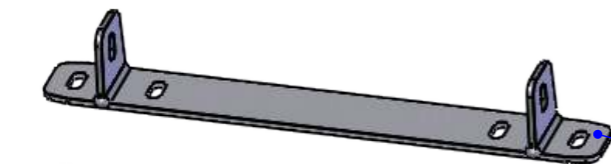
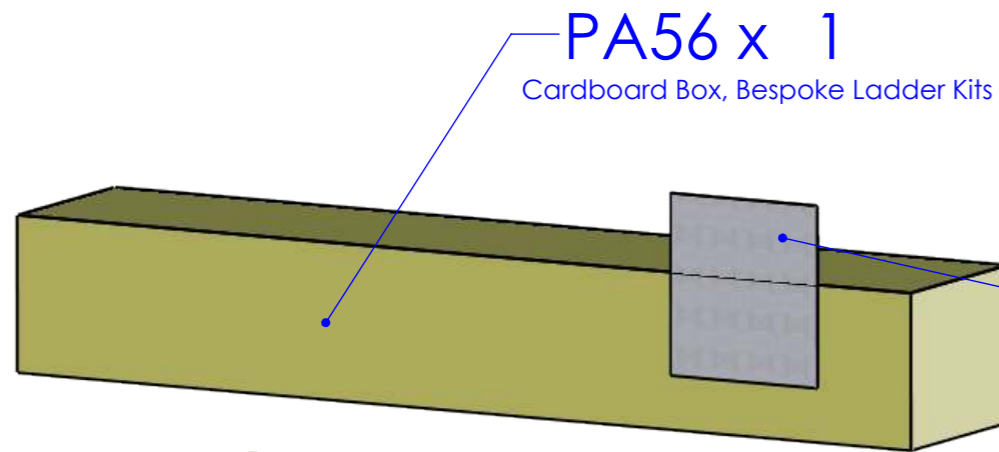


ISSUE:	DRAWN BY:	CHECKED BY:	CRF NO:	DATE:	DESCRIPTION:
A	JL	KB	2189	30/07/19	New Ladder Kit.



DRAWING NO: LK31 (1 of 6)	DESCRIPTION: Aluminium Ladder Fitting Kit, Daily H1 2015-	DESIGNED BY: J.Lowe 30/07/19
MATERIAL SIZE: n/a	MATERIAL SPEC: n/a	WEIGHT: 3.17Kg
© NOTE: This drawing is the property of Rhino Products Ltd and must not be used or copied without written consent. The Rhino Products name and logo must remain clearly visible in any reproduction.		

 THIRD ANGLE PROJECTION	
UNLESS OTHERWISE SPECIFIED: DIMENSIONS ARE IN MM	
0.00	±0.2
0.0	±0.5
ANG	±0.5°
DERIVED DIMENSIONS SHOWN IN BRACKETS	
DEBURR AND BREAK ALL SHARP EDGES	
SHEET SIZE A3	SHEET SCALE: 2:9

